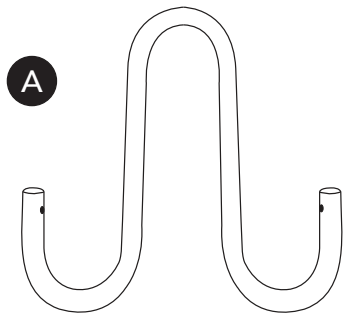
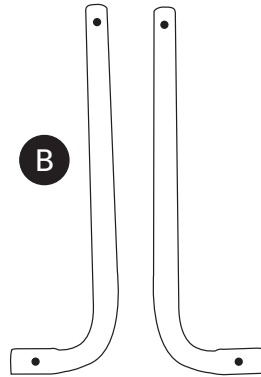


BOX CONTENTS

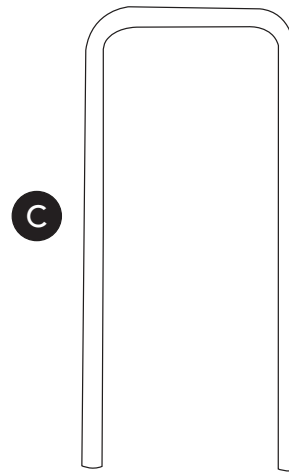
Tools required: 2 X 13mm open-ended spanners or shifters



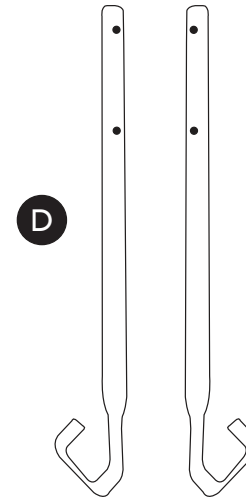
Compactor Base: X 1



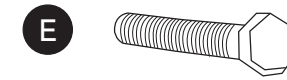
Connector Legs: X 2



Handle: X 1



Locking Arms: X 2



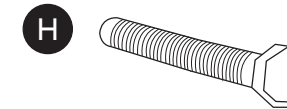
40mm Bolts:
X 4



Nylon Washers:
X 14



Locking Nuts:
X 6



70mm Bolts:
X 2

STEP 1

Connect the lower bolt hole of the Connector Legs (B) to the corresponding fitting on the Compactor Base (A) using:

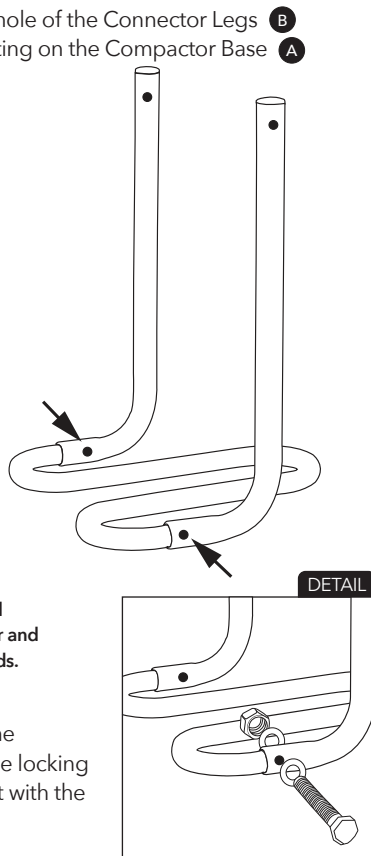
- 1 X 40mm Bolt (E)
- 2 X Nylon Washers (F)
- 1 X Locking Nut (G)

for each hole marked with the arrow on the diagram.

ENSURE a nylon washer is placed on both the nut and bolt head side of the fitting as per the diagram.

The locking nut must be fitted with the black internal washer and recessed edge facing outwards.

Once done, tighten so the connection is firm and the locking nut has made full contact with the thread of the bolt.

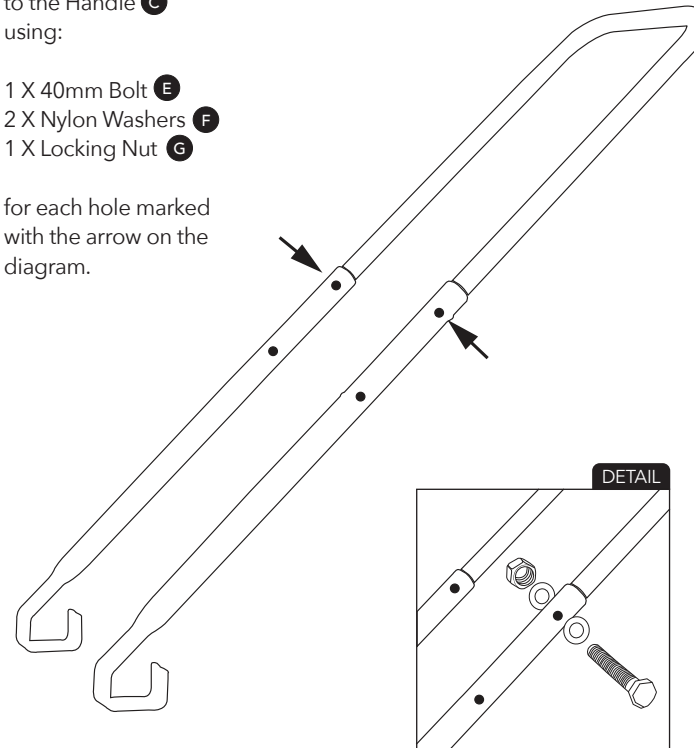


STEP 2

Align and connect the upper bolt hole of the Locking Arms (D) to the Handle (C) using:

- 1 X 40mm Bolt (E)
- 2 X Nylon Washers (F)
- 1 X Locking Nut (G)

for each hole marked with the arrow on the diagram.

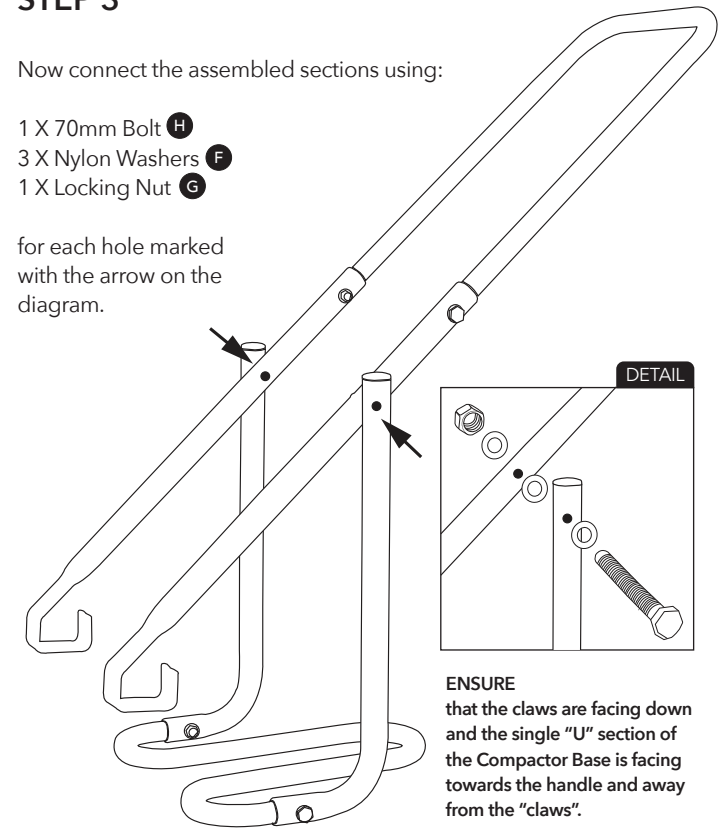


STEP 3

Now connect the assembled sections using:

- 1 X 70mm Bolt (H)
- 3 X Nylon Washers (F)
- 1 X Locking Nut (G)

for each hole marked with the arrow on the diagram.



ENSURE that the claws are facing down and the single "U" section of the Compactor Base is facing towards the handle and away from the "claws".

Do not over-tighten. Ensure the base can swing freely.

**2 YEAR
WARRANTY**

FOGOMaster Operation

1. Ensure the bin is completely open and the lid is folded back
2. Place the claws OVER the handles and allow the bottom of the compactor base to come into contact with the waste in the bin
3. Standing at the front of the bin, pull back on the unit allowing the claws to "lock" onto the bin handles. Pull down on the handle so the compactor base can depress the waste within the bin
4. Repeat several times until waste within the bin is at the desired level
5. Remove the FOGOMaster and store on the back of the bin from bin handles

Please note - do not use excessive force or "hang off" the handle when using the unit as this may cause damage to the bin or possible injury

FOGOMaster Working Specifications

- The unit is suitable for most 120 and 240 litre bins
- The unit is designed for food and garden organics, soft general household waste and commercial waste
- The unit should not be used to compress metal, timber or hard plastic as this will damage the unit and/or the bin
- It is recommended the unit should be kept out of direct sunlight and rain

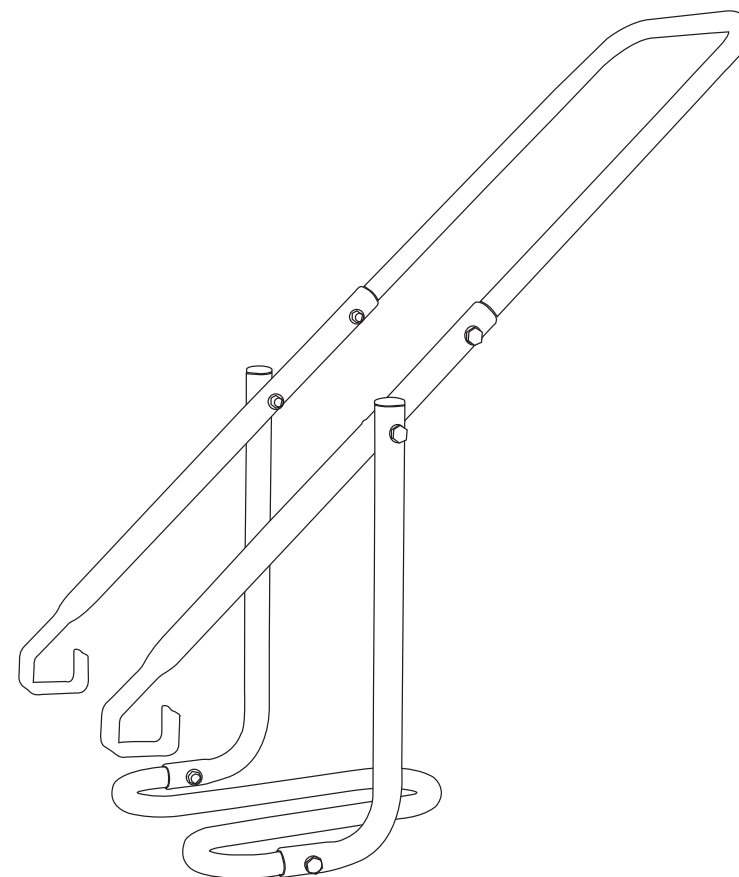
CUSTOMER SUPPORT & ENQUIRIES

TEL : 1300 490 922
info@fogomaster.com.au
www.fogomaster.com.au

MADE IN CHINA
ITEM NO : VAP01



Food Organics | Garden Organics | General Waste



WASTE COMPACTOR Assembly & User Guide